

# MISSION: LIFELINE EMS RECOGNITION

Alicia Webster

Director of Quality and Systems Improvement

American Heart Association

Oklahoma/Rural Texas

[Alicia.Webster@heart.org](mailto:Alicia.Webster@heart.org)

M 580-591-1343



Alicia Webster is the Quality Systems and Improvement Director for Oklahoma and Rural Texas for the American Heart Association. She was the Stroke, STEMI, PVD/PAD coordinator for the hospital she came from and had 10 years in the Cath Lab prior to coming into her quality role at that same facility. Her passion grew for lending a hand to improve systems of care during her work with various referral facilities to her hospital. Transitioning into this role has been a perfect fit and she is excited to continue her work on a larger scale. She received her Bachelors degree from the University of Oklahoma.



# DISCLOSURES

## FINANCIAL DISCLOSURE:

No financial relationships to disclose

## UNLABELED/UNAPPROVED USES DISCLOSURE:

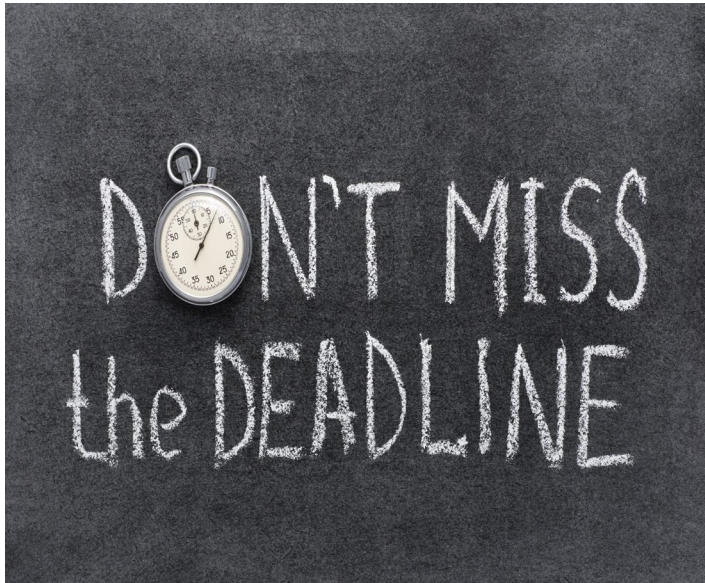
None to disclose

# MISSION: LIFELINE EMS RECOGNITION



LAUNCHED IN 2014 MISSION: LIFELINE EMS RECOGNITION CELEBRATES THE ACHIEVEMENT OF THE PREHOSPITAL PROVIDERS AND THEIR COLLABORATION WITH EACH OTHER AND DESTINATION HOSPITALS SPECIFIC TO STEMI PATIENT CARE.

# NEW DATES FOR 2020 EMS RECOGNITION



NEW RECOGNITION APPLICATION SUBMISSION  
DEADLINE

MONDAY, MARCH 20, 2020 11:59 PM CT

THE RECOGNITION APPLICATION IS CURRENTLY  
ACCESSIBLE TO BEGIN DATA ENTRY. FORMAL  
SUBMISSION FOR RECOGNITION ANALYSIS CAN  
BEGIN JANUARY 1, 2020.

# REQUESTING A UNIQUE APPLICATION LINK

2019 Mission: Lifeline EMS recognition applicants are automatically provided a unique application link for the 2020 recognition year. For agencies that did not apply in 2019 and would like a unique application link to apply for 2020 recognition please use the [2020 M:L EMS Recognition Application Link Request form](#) to request a link and one will be provided.



For questions please email [Missionlifeline@heart.org](mailto:Missionlifeline@heart.org) or reach out to your local AHA Quality and Systems Improvement Director.

# RECOGNITION VOLUME CRITERIA



Volume criteria for 2020  
Mission: Lifeline EMS  
Recognition is at least 4 STEMI  
patients for the calendar year  
for all levels of award  
achievement.

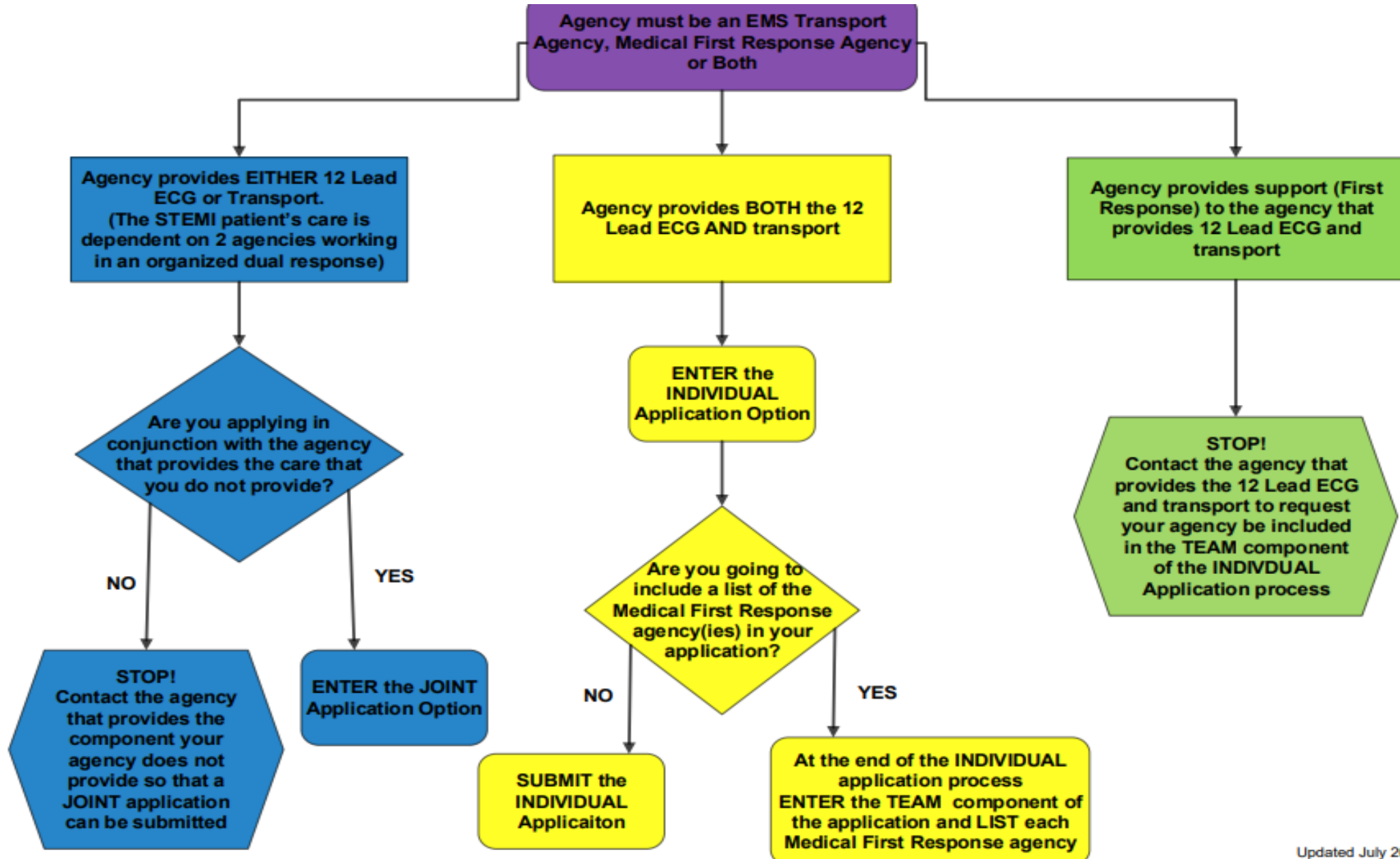


Volume is determined by  
Measure 3 and/or 4



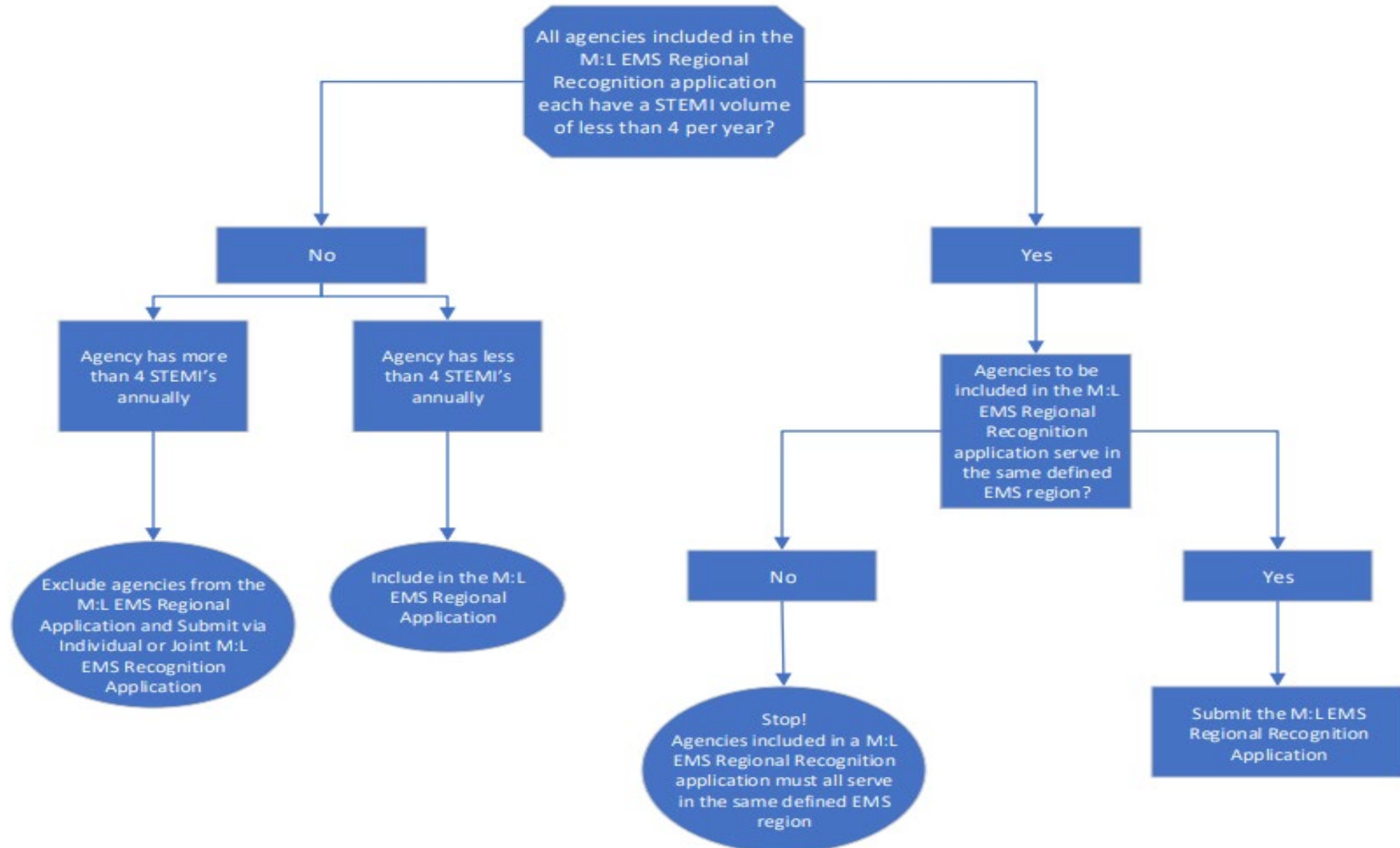
Exclusions do not affect  
volume as they relate to  
the minimum volume  
requirements.

# APPLICATION CATEGORY SELECTION PROCESS





# REGIONAL APPLICATION CATEGORY SELECTION PROCESS



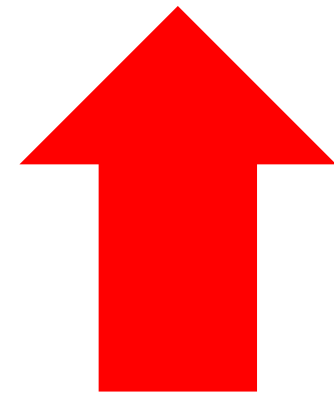
## AWARD LEVELS

Award Level	Time Period of Compliance	Minimum Adherence Score	Minimum Volume Requirements
Bronze	At least 1 calendar quarter	≥75% on all required measures	4 or more in calendar year
Silver	Annual compliance		
Gold	Annual compliance + Silver or Gold in 2019		

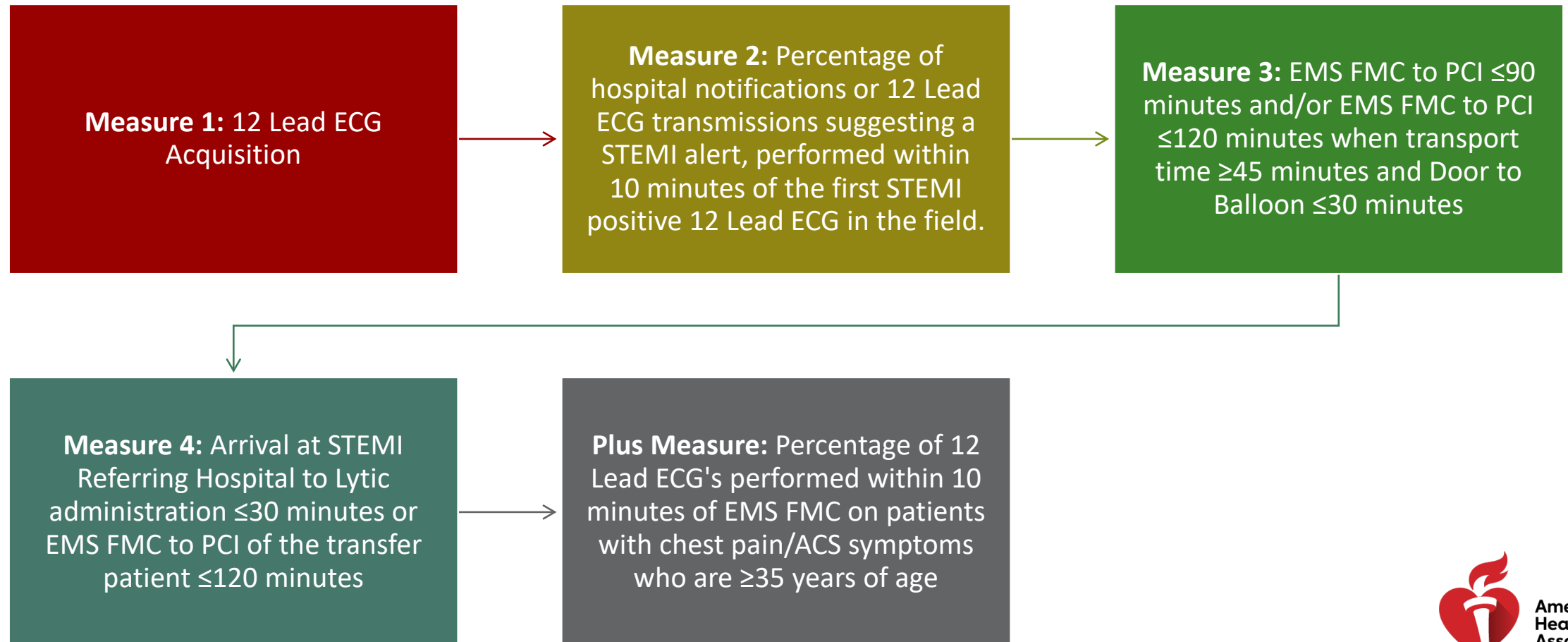
## 2019 A SPECTACULAR YEAR FOR MISSION: LIFELINE EMS RECOGNITION



53% INCREASE IN THE NUMBER  
OF AWARDS ISSUED TO EMS  
AGENCIES IN 2019



# MISSION: LIFELINE EMS RECOGNITION ACHIEVEMENT MEASURES



# Mission: Lifeline EMS Recognition Achievement Measures

## MEASURE 1: % 12 LEAD ECG ACQUISITION

### Include

- Patients with non-traumatic chest pain/ACS symptoms

AND

- Patient Age

AND

- 35 years or older

AND

- Transported to a hospital

### NEW Allowable Exclusion

- Indication of the presence of cardiac arrest at any time during this EMS event

# Mission: Lifeline EMS Recognition Achievement Measures

## MEASURE 2: % STEMI NOTIFICATION WITHIN 10 MINUTES OF FIRST STEMI POSITIVE 12 LEAD ECG

### Include

- Patients 35 years or over
- AND
- With a STEMI noted on pre-hospital ECG (either 1st pre-hospital 12 Lead ECG or Subsequent prehospital 12 Lead ECG)
- AND
- Transported to a hospital

### Allowable Exclusions

- Delay in patient or family providing consent for treatment and transport
- Indication of the presence of cardiac arrest at any time during this EMS event
- Delay caused by the patient also being a trauma victim or having other time-sensitive comorbid condition requiring priority care

# Mission: Lifeline EMS Recognition Achievement Measures

## MEASURE 3: % EMS FMC TO PCI WITHIN 90 MINUTES

### INCLUDE

- PATIENTS 18 YEARS OF AGE OR OLDER
- AND
- WITH A STEMI NOTED ON PRE-HOSPITAL ECG
- AND
- TRANSPORTED TO A STEMI RECEIVING CENTER (PRIMARY PCI)
- AND
- PRIMARY PCI WAS PERFORMED

### Allowable Exclusions

- Delay in patient or family providing consent for treatment and transport (prehospital/inhospital)
- Delay caused by patient experiencing cardiac arrest and the need for intubation (prehospital/in-hospital)
- Delay caused by initial prehospital ECGs being negative for STEMI
- Delay caused by the patient also being a trauma victim or having other time-sensitive comorbid condition requiring priority care. (prehospital/in-hospital)
- Delay caused by difficulty in accessing femoral or radial artery (in the cath lab)

# Mission: Lifeline EMS Recognition Achievement Measures

## MEASURE 4: % ARRIVAL TO FIBRINOLYTIC ADMINISTRATION WITHIN 30 MINUTES

### Include

- Patients 18 years of age or older AND
- With a STEMI noted on pre-hospital ECG AND
- Transported to a STEMI Referring Center AND
- Thrombolytics Administered OR
- Patients are transported to a STEMI Receiving Center for Primary PCI

### Allowable Exclusions

- Delay in patient or family providing consent for treatment and transport (prehospital/in-hospital)
- Delay caused by patient experiencing cardiac arrest and the need for intubation (prehospital/in-hospital)
- Delay caused by initial and/or subsequent ECGs being negative for STEMI (prehospital/in-hospital)
- Delay caused by the patient also being a trauma victim or having other time-sensitive comorbid condition requiring priority care. (prehospital/in-hospital)



# MISSION: LIFELINE EMS RECOGNITION PLUS MEASURE

PLUS MEASURE: % 12 LEAD ECG'S PERFORMED WITHIN 10 MINUTES OF EMS FMC

\*REQUIRED FOR REPORTING

INCLUDE

- PATIENTS WITH NON-TRAUMATIC CHEST PAIN/ACS SYMPTOMS

AND

- PATIENT AGE

AND

- 35 YEARS OR OLDER

AND

- TRANSPORTED TO A HOSPITAL

NEW ALLOWABLE EXCLUSION

- INDICATION OF THE PRESENCE OF CARDIAC ARREST AT ANY TIME DURING THIS EMS EVENT



# ACHIEVEMENT MEASURES BY DESTINATION TYPE

All Achievement measures may not apply due to the transport destination hospital type selected

	Transports patients to STEMI Receiving Center	Transports patients to STEMI Referring Hospital and patients receive lytics	Submit data for the following measures
Agency 1	Yes	Yes	1,2,3,4
Agency 2	Yes	No	1,2,3
Agency 3	No	Yes	1,2,4
Agency 4	No	No	Ineligible to apply

Data must be entered for all required achievement measures

# MISSION: LIFELINE EMS REPORTING MEASURES



ALL REPORTING MEASURES ARE  
OPTIONAL

SUBMITTING REPORTING MEASURES  
DATA IS NOT REQUIRED TO ACHIEVE  
RECOGNITION.

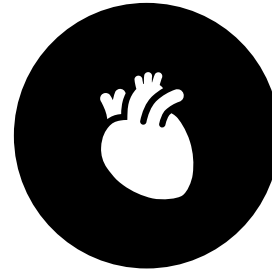
# MISSION: LIFELINE EMS REPORTING MEASURES



Reporting Measure A:  
% Stroke Patients Where A  
Stroke Alert Was Provided To  
Destination Hospital



Reporting Measure B:  
% Stroke Patients With  
Documented Last Known Well  
Time (LKW)



Reporting Measure C:  
% Of Out Of Hospital Cardiac  
Arrest Patients (Suspected  
Cardiac Etiology) With ROSC  
In The Field And Maintained  
To The ED Who Had A 12 Lead  
ECG Acquired



Reporting Measure D:  
% STEMI Patients Who  
Received Aspirin In The Field –  
Either Self Administered Or  
Administered By EMS

# NEW FOR 2021 RECOGNITION

CALENDAR YEAR 2020 DISCHARGES

CURRENT REPORTING MEASURES A AND B WILL MOVE TO REQUIRED ACHIEVEMENT MEASURES.

PERCENTAGE OF PATIENTS WITH SUSPECTED STROKE FOR WHOM A “LAST KNOWN WELL” (LKW) TIME IS DOCUMENTED BY EMS

## INCLUDE

ALL PATIENTS AGE 18 YEARS AND OLDER WHO ARE TREATED BY EMS AND

WHO WERE EVALUATED BY EMS AT: THEIR USUAL PLACE OF RESIDENCE (HOME, ASSISTED LIVING, SNF, ETC.) OR

ANOTHER NON-HEALTHCARE SETTING (E.G., RETAIL STORE, CHURCH) OR

AN OUTPATIENT HEALTHCARE SETTING (E.G., DOCTOR’S OFFICE, URGENT CARE CLINIC) AND

WHO WERE IDENTIFIED BY EMS AS HAVING A SUSPECTED STROKE.

PERCENTAGE OF PATIENTS WITH SUSPECTED STROKE FOR WHOM EMS PROVIDED ADVANCE NOTIFICATION TO THE RECEIVING HOSPITAL

## INCLUDE

ALL PATIENTS AGE 18 YEARS AND OLDER WHO ARE TREATED BY EMS AND

WHO WERE EVALUATED BY EMS AT: THEIR USUAL PLACE OF RESIDENCE (HOME, ASSISTED LIVING, SNF, ETC.) OR

ANOTHER NON-HEALTHCARE SETTING (E.G., RETAIL STORE, CHURCH) OR

AN OUTPATIENT HEALTHCARE SETTING (E.G., DOCTOR’S OFFICE, URGENT CARE CLINIC) AND

WHO WERE IDENTIFIED BY EMS AS HAVING A SUSPECTED STROKE.

## NEW REPORTING MEASURE

PERCENTAGE OF PATIENTS WITH SUSPECTED STROKE EVALUATED BY EMS USING A VALIDATED SCREENING TOOL (SUCH AS, THE CINCINNATI PREHOSPITAL STROKE SCALE OR THE LOS ANGELES PREHOSPITAL STROKE SCREEN)

### INCLUDE

ALL PATIENTS AGE 18 YEARS AND OLDER WHO ARE TREATED BY EMS AND

WHO WERE EVALUATED BY EMS AT:

THEIR USUAL PLACE OF RESIDENCE (HOME, ASSISTED LIVING, SNF, ETC.) OR

ANOTHER NON-HEALTHCARE SETTING (E.G., RETAIL STORE, CHURCH) OR

AN OUTPATIENT HEALTHCARE SETTING (E.G., DOCTOR'S OFFICE, URGENT CARE CLINIC) AND

WHO WERE IDENTIFIED BY EMS AS HAVING A SUSPECTED STROKE



## FOR MORE INFORMATION AND RESOURCES



VISIT THE MISSION: LIFELINE EMS  
RECOGNITION WEBSITE AT  
[WWW.HEART.ORG/MISSIONLIFELINEEMS](http://WWW.HEART.ORG/MISSIONLIFELINEEMS)



CONTACT LOCAL AHA QUALITY  
IMPROVEMENT DIRECTOR



EMAIL [MISSIONLIFELINE@HEART.ORG](mailto:MISSIONLIFELINE@HEART.ORG)



## The Texas Mission Lifeline EMS Challenge!!!

Whichever RAC Region (RAC A, B, C, D, F, G, H, K, or J) in TEXAS that has the most EMS systems that sign-up and complete the FREE 2020 Mission Lifeline EMS Recognition, can WIN a FREE lunch!!

Deadline Monday, March 2, 2020

[Click here](#) to request your unique application link!

Together, improving our STEMI Systems of Care in TEXAS!!!

For inquiries, please contact Alicia Webster (580) 591-1343 or at [Alicia.Webster@heart.org](mailto:Alicia.Webster@heart.org)

- MISSION: LIFELINE TEXAS EMS CHALLENGE 2020!!
- Deadline March 20th



# RECOGNITION MEASURES:

2020 Mission: Lifeline EMS Recognition Measure	Measure Impact to Care and Outcomes
<b>Measure 1:</b> 12 Lead ECG Acquisition	Early 12 Lead acquisition → Early recognition of STEMI → Early Notification to the ED → Early Activation to the Cath Lab → Timely Reperfusion
<b>Measure 2:</b> Percentage of hospital notifications or 12 Lead ECG transmissions suggesting a STEMI alert, performed within 10 minutes of the first STEMI positive 12 Lead ECG in the field.	Early 12 Lead acquisition → Early recognition of STEMI → Early Notification to the ED → Early Activation to the Cath Lab → Timely Reperfusion
<b>Measure 3:</b> EMS FMC to PCI ≤90 minutes and/or EMS FMC to PCI ≤120 minutes when transport time ≥45 minutes and Door to Balloon ≤30 minutes	Coordination of care between EMS and the STEMI Receiving Centers
<b>Measure 4:</b> Arrival at STEMI Referring Hospital to Lytic administration ≤30 minutes or EMS FMC to PCI of the transfer patient ≤120 minutes	Coordination of care between EMS and the STEMI Referring hospitals
<b>Plus Measure (Optional):</b> Percentage of 12 Lead ECG's performed within 10 minutes of EMS FMC on patients with chest pain/ACS symptoms who are ≥35 years of age	Early 12 Lead acquisition → Early recognition of STEMI → Early Notification to the ED → Early Activation to the Cath Lab → Timely Reperfusion

# TIPS & TRICKS FOR MISSION LIFELINE APPLICATION

- WEBSITE: REFER TO THE [MISSION LIFELINE EMS](#) WEBSITE REGULARLY FOR INFORMATION ON 2020 RECOGNITION, THE MEASURES, AND THE APPLICATION PROCESS.
- APPLICATION LINK: IF YOUR AGENCY HAS NEVER APPLIED FOR MISSION: LIFELINE EMS® BEFORE, YOU MAY REQUEST AN APPLICATION LINK [HERE](#). IF YOU'VE APPLIED BEFORE, YOU SHOULD HAVE RECEIVED AN EMAIL FROM THE MISSION: LIFELINE EMS TEAM WITH YOUR LINK.
- PRINT THE APPLICATION: PRINT THE [PDF](#) OF THE MISSION: LIFELINE EMS® APPLICATION, REVIEW IT THOROUGHLY, AND KEEP IT HANDY. THIS WILL HELP YOU UNDERSTAND WHAT DATA IS REQUIRED AND GIVE YOU CHANCE TO PLAN AND OBTAIN THE NECESSARY DATA.
- ASK QUESTIONS: REACH OUT TO YOUR AHA QSI DIRECTOR IF YOU HAVE ANY QUESTIONS ABOUT THE MEASURES, THE DATA, OR HOW TO OBTAIN THE DATA BEFORE YOU BEGIN.
- NEW DATA TOOL: UTILIZE THE 2020 MISSION: LIFELINE EMS® [DATA TOOL](#) TO PREPARE YOUR DATA (IF YOU DON'T ALREADY HAVE A SYSTEM IN PLACE). THIS DATA TOOL SERVES ONLY TO HELP YOU ORGANIZE YOUR DATA. YOU STILL NEED TO SUBMIT THE APPLICATION USING AN APPLICATION LINK TO BE CONSIDERED FOR RECOGNITION.

# TIPS & TRICKS FOR MISSION LIFELINE APPLICATION

- **SAVE AND STORE YOUR APPLICATION LINK: SAVE THE LINK TO YOUR FAVORITES AND STORE THE URL IN YOUR CONTACTS SO YOU CAN RETRIEVE IT EASILY.**
- **PLEASE NOTE BEFORE YOU BEGIN THE LIVE APPLICATION:**
  - You can now submit quarters of data in advance (e.g. Q1, Q2 of 2019) or you can enter all your data at once for the 2019 calendar year (once it is available).
  - Double check the accuracy of your data before beginning your application.
  - Once you begin to enter data into the live application, check your work before hitting "next" to advance to the next section. You cannot return to previous sections once you start entering data.
- **SAVING YOUR DATA: YOUR DATA WILL SAVE AUTOMATICALLY. DON'T HIT "SUBMIT" UNTIL ALL YOUR 2019 DATA IS COMPLETE, AND YOU ARE READY TO SUBMIT FOR RECOGNITION.**
- **PROBLEMS WITH THE LINK: IF YOU FOLLOW THE STEPS ABOVE, HOPEFULLY ISSUES WITH THE LINK CAN BE AVOIDED. IF YOUR APPLICATION LINK LOCKS OR YOU REALIZE YOU NEED TO GO BACK AND CHANGE SOMETHING, YOU CAN. HOWEVER, YOU WILL NEED TO REACH OUT TO [MISSIONLIFELINE@HEART.ORG](mailto:MISSIONLIFELINE@HEART.ORG) (AND COPY YOUR AHA QSI DIRECTOR) FOR GUIDANCE ON ISSUES WITH THE APPLICATION LINK OR MAKING CHANGES TO THE APPLICATION.**

THANK YOU FOR ALL YOU DO AND GOOD LUCK!!

# MISSION LIFELINE – EMS RECOGNITION *CONGRATULATIONS!!!!*

- Gold Plus 2019 Recognition



American Heart Association.

It's a race against time when a heart attack hits. The American Heart Association helps us pick up the pace.

In fact, we're proud to share that we've achieved the association's Mission: Lifeline® EMS cardiac care standards.

It means we're providing the right training and care for your heart. That's because we've got our eye on the prize: your life. We hope you'll keep your eye on us.

**2019**  
**Mission: Lifeline®**  
**GOLD PLUS**  
**EMS**

**Take heart: Our cardiac care has been recognized.**



American Heart Association.

The American Heart Association recognizes this EMS provider for attaining 75% or higher performance on each applicable Mission: Lifeline® EMS Achievement Measure and the PLUS measure for a consecutive 24-month interval to improve the quality of care for STEMI patients.

# GWTG- CAD AND MISSION: LIFELINE WEBINAR SERIES

## GWTG-CAD AND MISSION: LIFELINE® 2020 WEBINAR SERIES



Every 3<sup>rd</sup> Tuesday beginning in February  
2p-3p Eastern/1p-2p Central

### Flyers, Calendar Invites or Both?

Title: GWTG-CAD – STEMI Referring Hospital QI and Engagement in STEMI Systems of Care

When: March 17<sup>th</sup>

Time: 2:00-3:00PM EST

[Register Today](#)

Title: GWTG-CAD – Arrival at First Facility to PCI

When: April 21<sup>st</sup>

Time: 2:00-3:00PM EST

[Register Today](#)

Title: GWTG-CAD- 2021 Mission: Lifeline Regional Recognition Updates

When: May 19<sup>th</sup>

Time: 2:00-3:00PM EST

[Register Today](#)





# QUESTIONS

American Heart Association