

Metabolic Resuscitation: a new approach to sepsis?

Katherine M. Berg MD

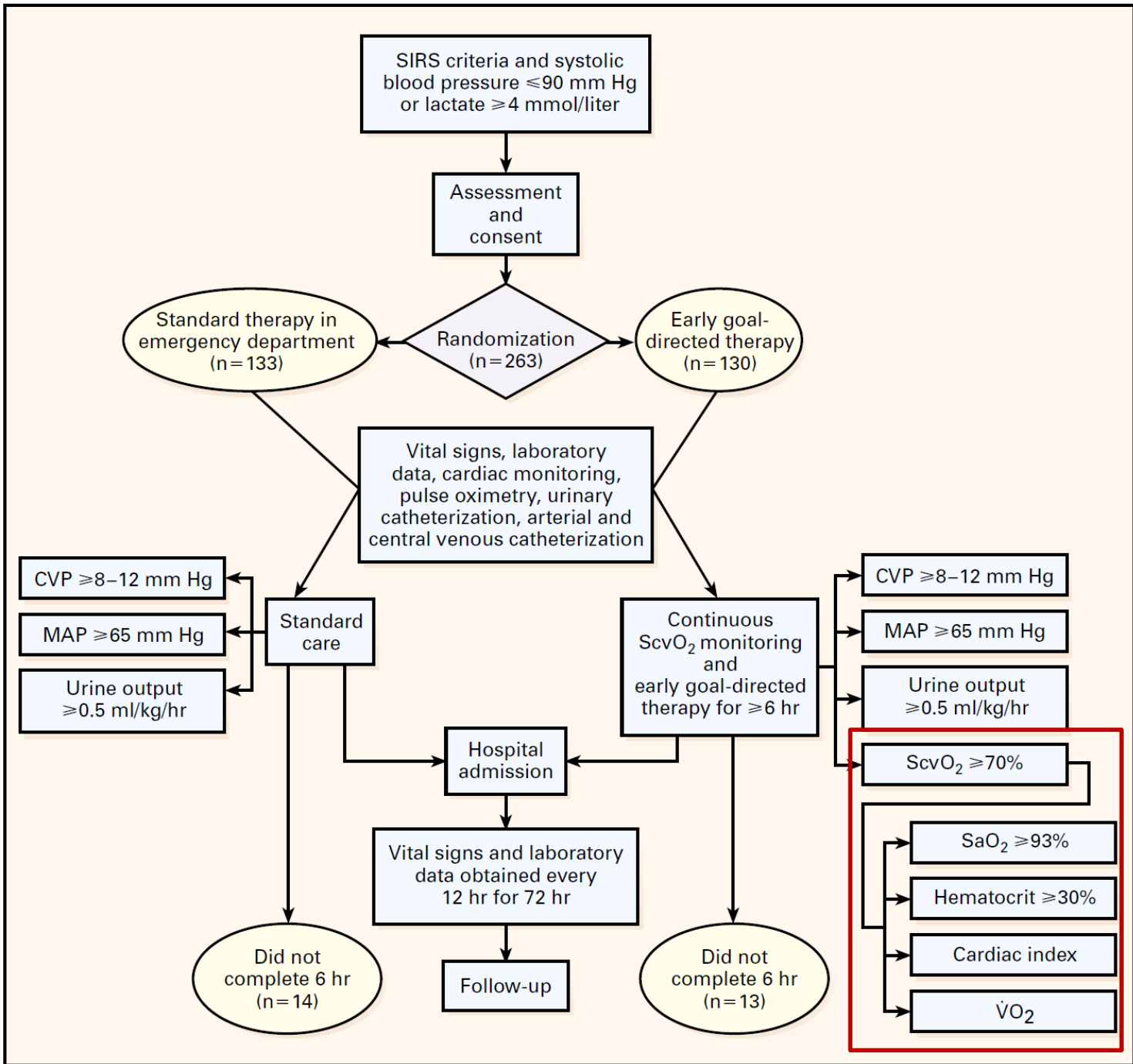
Pulmonary and Critical Care

Beth Israel Deaconess Medical Center

Center for Resuscitation Science

Research Support/Disclosures

- NIH K23 HL128814-01A1 (PI)
- American Heart Association grants (co-investigator)



ORIGINAL ARTICLE

Trial of Early, Goal-Directed Resuscitation for Septic Shock

Paul R. Mouncey, M.Sc., Tiffany M. Osborn, M.D., G. Sarah Power, M.Sc., David A. Harrison, Ph.D., M. Zia Sadique, Ph.D., Richard D. Grieve, Ph.D., Rahi Jahan, B.A., Sheila E. Harvey, Ph.D., Derek Bell, M.D., Julian F. Bion, M.D., Timothy J. Coats, M.D., Mervyn Singer, M.D., J. Duncan Young, D.M., and Kathryn M. Rowan, Ph.D., for the ProMISe Trial Investigators*

ORIGINAL ARTICLE

Goal-Directed Resuscitation for Patients with Early Septic Shock

The ARISE Investigators and the ANZICS Clinical Trials Group*

The NEW ENGLAND
JOURNAL *of* MEDICINE

ESTABLISHED IN 1812

MAY 1, 2014

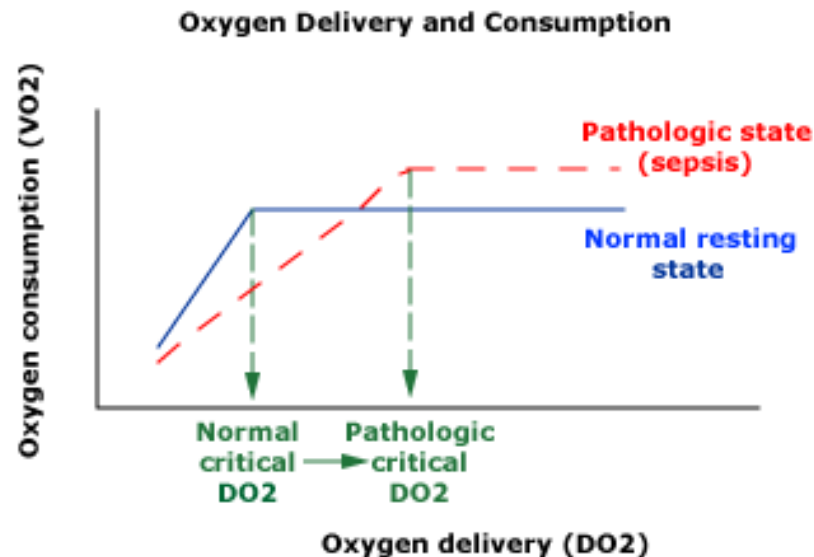
VOL. 370 NO. 18

A Randomized Trial of Protocol-Based Care for Early Septic Shock

The ProCESS Investigators*

Why isn't it working?

Oxygen delivery (DO₂) and consumption (VO₂)



In the normal state (blue line), oxygen consumption is constant over a range of DO₂, and decreases only when DO₂ falls below a critical level (critical DO₂). Pathologic changes caused by sepsis or systemic inflammatory responses (red line) cause increased VO₂ and impaired peripheral oxygen utilization, resulting in an elevation in critical DO₂.

Oxygen transport patterns in patients with sepsis syndrome or septic shock: Influence of treatment and relationship to outcome.

Hayes, Michelle; MD, FRCA; Timmins, Andrew; Yau, Ernest; Palazzo, Mark;
MD, FRCP; Watson, David; Hinds, Charles

Critical Care Medicine. 25(6):926-936, June 1997.

	Survivors			Nonsurvivors		
	T0	T1	Tmax	T0	T1	Tmax
MAP (mm Hg)	82 ± 73, 95	91 ± 80, 106	93 ± 86, 101 ^a	69 ± 64, 76 ^b	69 ± 65, 82 ^b	84 ± 80, 91 ^{c, d}
PAOP (mm Hg)	9 ± 6, 11	16 ± 15, 17 ^c	12 ± 10, 14 ^e	6 ± 10, 13	16 ± 15, 17 ^e	15 ± 13, 16 ^{d, e}
SVRI (dyne·sec/ cm ⁵ ·m ²)	1622 ± 1417, 1924	1480 ± 1113, 1773 ^a	1120 ± 956, 1399 ^e	1379 ± 1110, 1859	1271 ± 1052, 1843	1174 ± 1082, 1281 ^a
LVSWI (g·m ²)	36 ± 32, 52	40 ± 33, 66 ^a	60 ± 49, 67 ^c	23 ± 18, 33 ^f	24 ± 17, 34 ^f	40 ± 33, 46 ^{c, f}
C(a- \bar{v})O ₂ (mL/dL)	3 ± 2.92, 3.98	2.9 ± 2.41, 3.64	2.6 ± 2.13, 3 ^a	3.23 ± 2.9, 3.72	3.33 ± 2.59, 3.87	2.43 ± 2.25, 2.77 ^c
O ₂ extr (%)	0.23 ± 0.21, 0.28	0.21 ± 0.16, 0.28	0.17 ± 0.15, 0.22 ^e	0.25 ± 0.23, 0.3	0.24 ± 0.2, 0.29 ^a	0.15 ± 0.14, 0.17 ^c
CI (L/min/m ²)	3.99 ± 2.87, 4.23	4.17 ± 3.9, 5.18 ^c	6.22 ± 5.1, 6.68 ^c	3.38 ± 2.79, 3.97	3.55 ± 2.935, 4.03 ^t	5 ± 4.28, 5.77 ^{b, c}
Do ₂ (mL/min/m ²)	454 ± 382, 579	642 ± 460, 739 ^a	997 ± 739, 1081 ^c	435 ± 363, 577	489 ± 402, 606	800 ± 691, 865 ^{c, d}
$\dot{V}O_2$ (mL/min/m ²)	120 ± 95, 133	121 ± 112, 133	170 ± 136, 172 ^c	108 ± 101, 124	109 ± 97, 131	120 ± 106, 139 ^f

MAP, mean arterial pressure; PAOP, pulmonary artery occlusion pressure; SVRI, systemic vascular resistance index; LVSWI, left ventricular stroke work index; C(a- \bar{v})O₂, arterial-venous oxygen content difference; O₂ extr, oxygen extraction ratio; CI, cardiac index; Do₂, oxygen delivery; $\dot{V}O_2$, oxygen consumption.

^a*p* < .05 within group statistics, when compared with baseline; ^b*p* < .01 between group statistics; ^c*p* < .001 within group statistics, when compared with baseline; ^d*p* < .05 between group statistics; ^e*p* < .01 within group statistics, when compared with baseline; ^f*p* < .001 between group statistics.

Data are expressed as median ± 25th, 75th percentiles.

Cytopathic Hypoxia

- The breakdown of aerobic metabolism in the presence of adequate oxygen delivery
- Failure of oxygen extraction
- No known way to improve extraction

59 year-old man, found on the street,
confused

T 98.6 P 110 BP 84/60 RR 32 Sat 98%

Gen: Tachypneic, dry mucous membranes

Chest: CTA bilaterally Heart: S1 S2 reg

Abd: Soft, mild diffuse tenderness

Neuro: A & O x 2, no focal neuro findings

Extrem: Cool, clammy

Arterial Blood Gas:

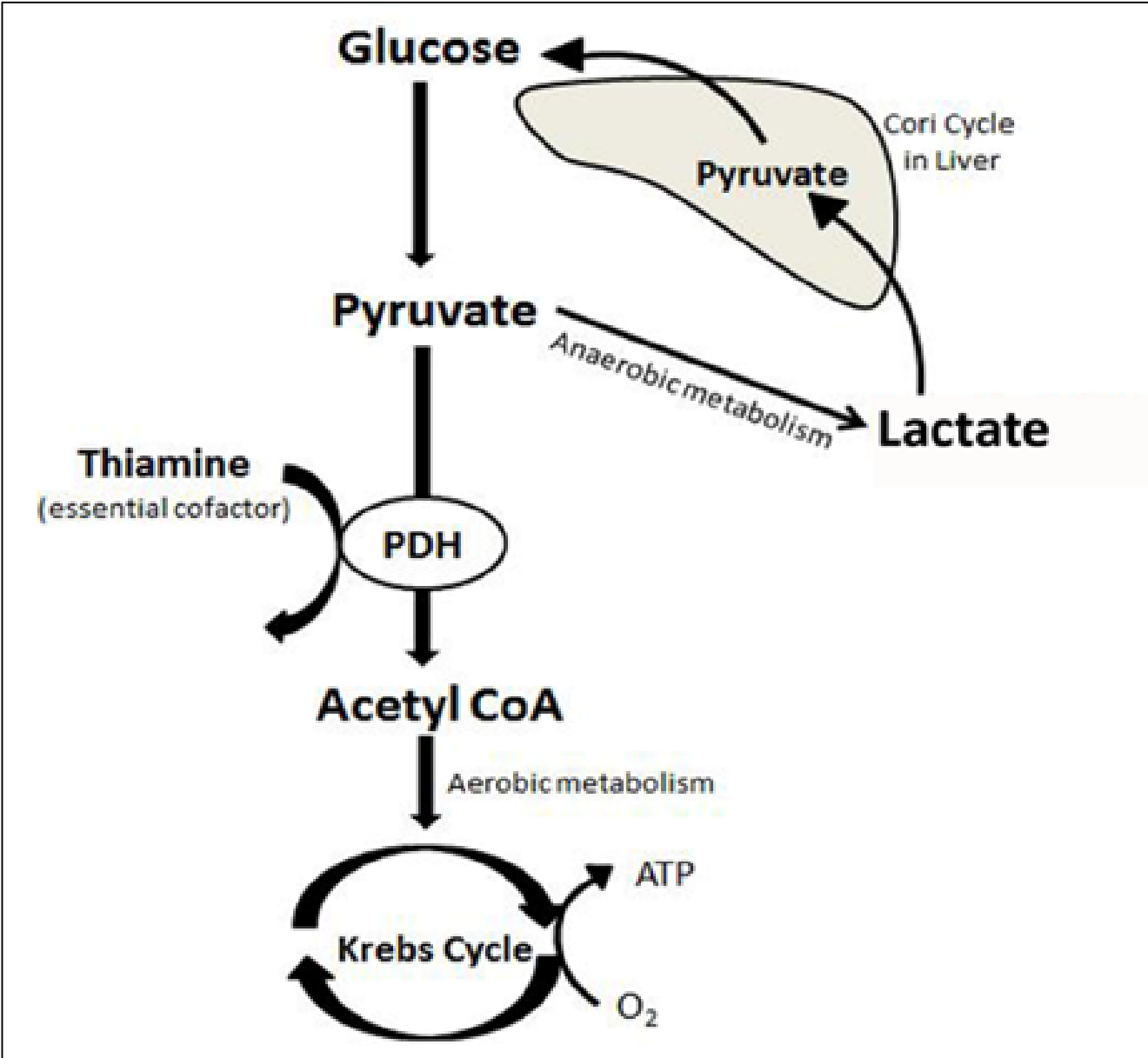
pH: 6.9 pCO₂: 10 HCO₂: 3

pO₂: 80 Sat: 96% Lactate: 27.2 mmol/dl

Complete Blood Count:

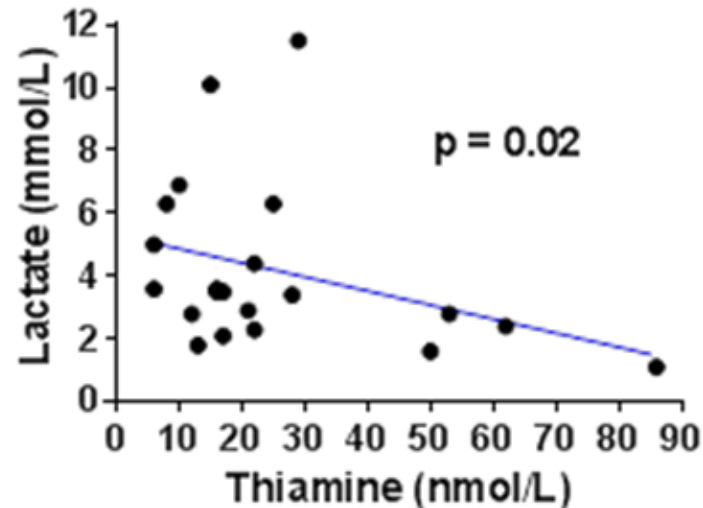
White Cell Count: 3.4 Hemoglobin: 8.1

Platelets: 230

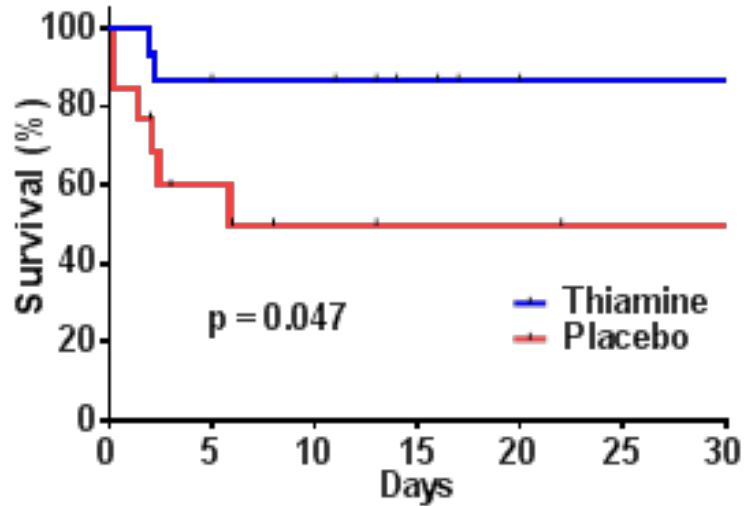


Thiamine Deficiency in Critical Illness

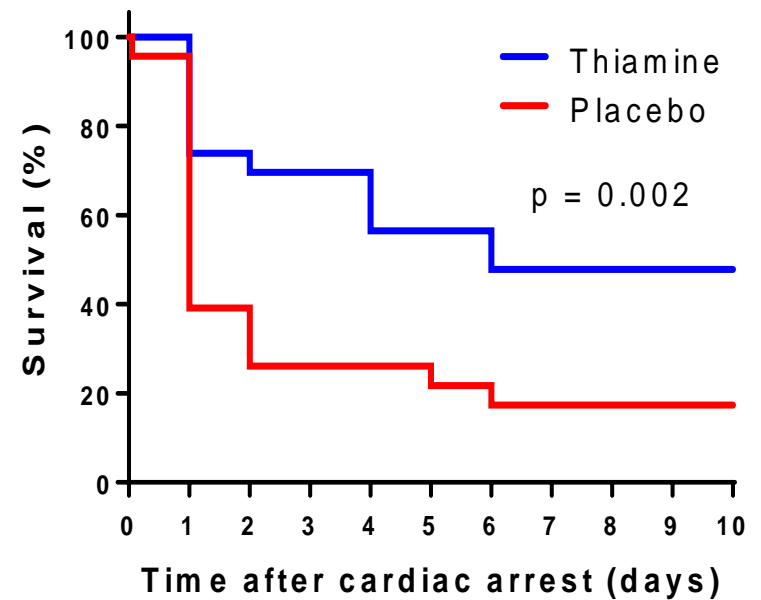
- 35% (28/80) of septic shock patients with elevated lactate
- 45% (7/16) of post-arrest patients
- Inverse correlation between thiamine and lactate in:
 - Sepsis
 - Post-arrest
 - DKA



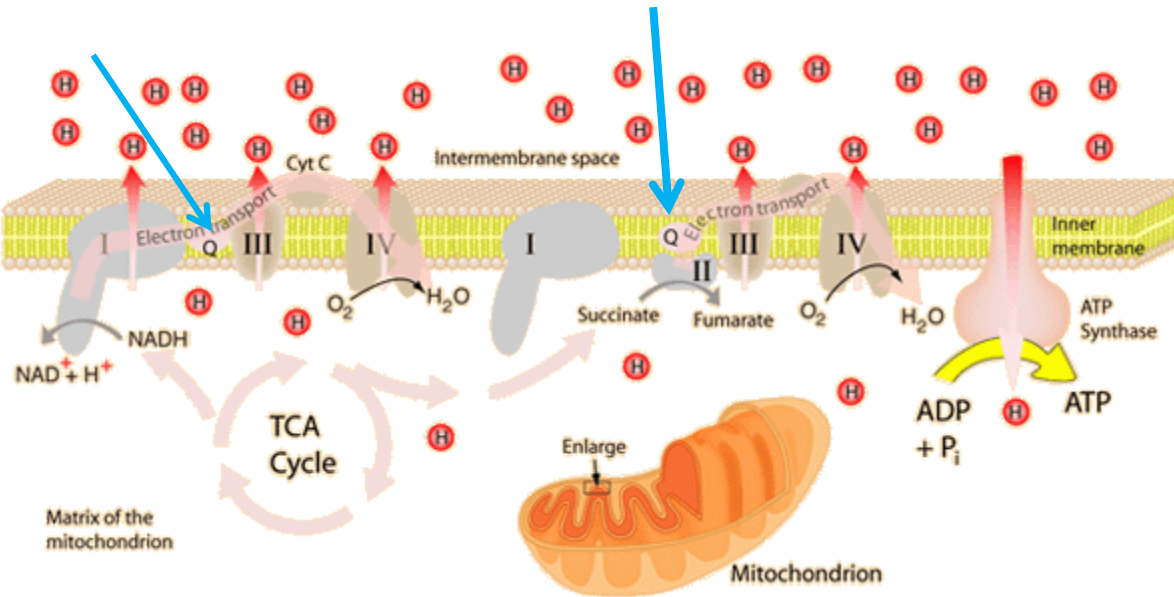
Thiamine decreased lactate and improved survival in septic shock patients with thiamine deficiency

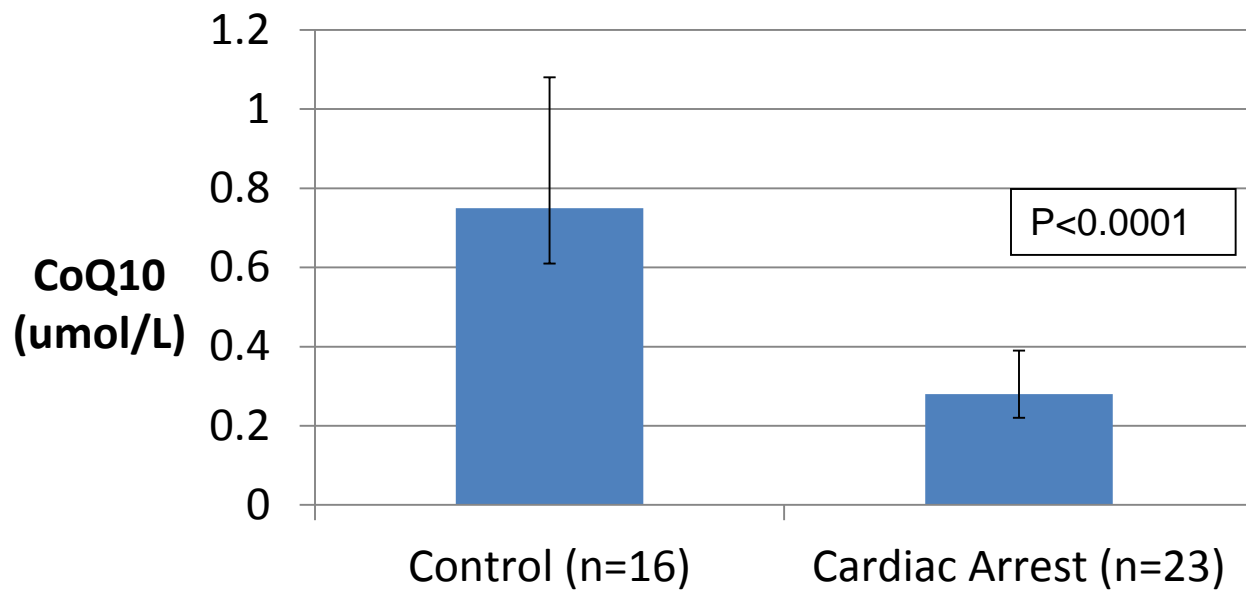


Thiamine improved survival in mouse model of cardiac arrest

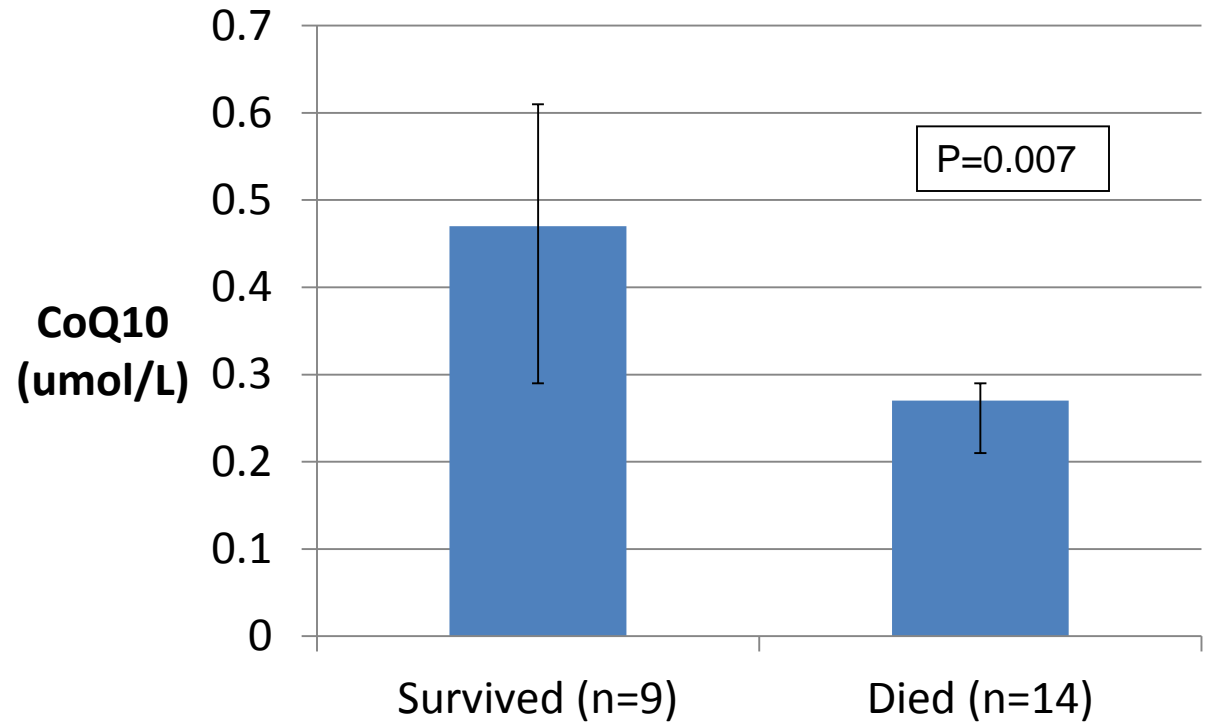


What about Coenzyme Q10?

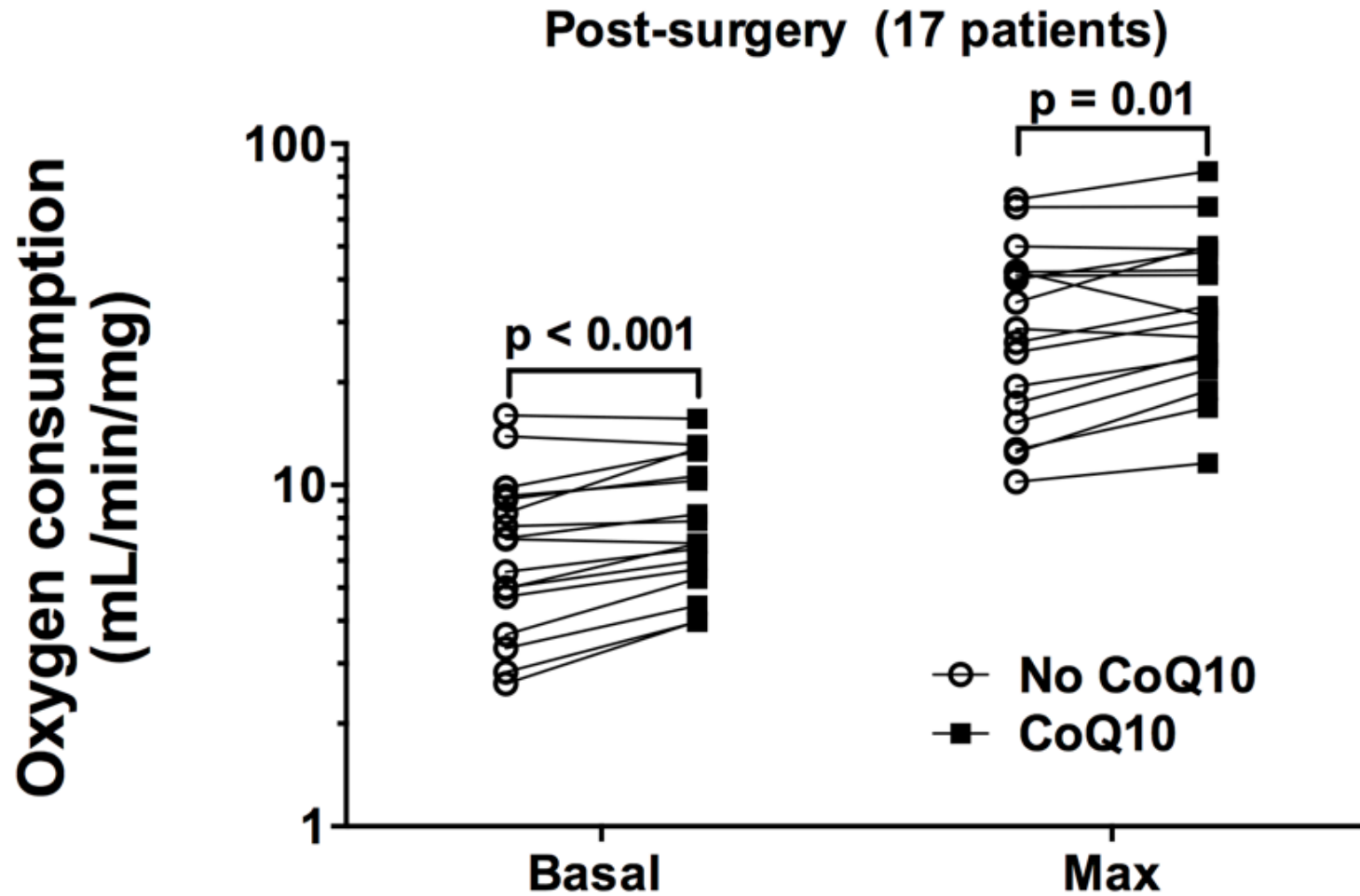




CoQ10 is low after cardiac arrest, and associated with survival



CoQ10 increases in vitro oxygen consumption after cardiac surgery



A cure for sepsis?

A critical-care physician at Eastern Virginia Medical School has found what he believes is a cure for sepsis. The discovery came by accident as Paul Marik, MBCh, was treating a patient who was dying of sepsis.



Courtesy EVMS



COURTESY EASTERN VA. MEDICAL SCHOOL



Vitamins C, B1, and Steroids for Sepsis



5:14 60°

Where do we go from here?

- Research, research, research
- Think about possible nutritional deficiencies in refractory shock
- Better understanding of mitochondrial function and how to support it may redefine “supportive care” of the critically ill patient

BIDMC Center for Resuscitation Science



Michael Donnino MD

Sarah Ganley

Michael Cocchi MD

Varun Konanki

Maureen Chase MD MPH

Jocelyn Portmann

Xiaowen Liu PhD

Anne Grossesteuer PhD

Ari Moskowitz MD

Mathias Holmberg MD

Amy Uber MD

Tatsuma Fukuda MD